

## Material: C15

Material: C15

Matériel: C15

## Tolerancia media 7e

Average tolerance 7e

Tolérance moyenne 7e

Dimensiones de rosca Nut dimensions Dimension Ecrou	Tolerancia $\phi$ de la rosca. 7e Edge $\phi$ Tolerance 7e Tolérance $\phi$ filetage 7e		$\phi$ Núcleo $\phi$ Core $\phi$ Cor	Tolerancia $\phi$ exterior 4h Outer $\phi$ Tolerance. 4h Tolérance $\phi$ extérieur. 4h	
	min	max		max	min
$\phi$ Exterior x Paso Outer $\phi$ x Pitch $\phi$ Extérieur x Pas			min		
16 x 4	13,640	13,905	10,80	16,000	15,700
20 x 4	17,640	17,905	14,80	20,000	19,700
24 x 5	21,094	21,394	17,50	24,000	23,665
28 x 5	25,094	25,394	21,50	28,000	27,665
30 x 6	26,547	26,882	21,90	30,000	29,625
32 x 6	28,547	28,882	23,90	32,000	31,625
36 x 6	32,547	32,882	27,90	36,000	35,625
40 x 7	36,020	36,375	30,50	40,000	39,575
44 x 7	40,020	40,375	34,50	44,000	43,575
48 x 8	43,468	43,868	37,30	48,000	47,550
50 x 8	45,468	45,868	39,30	50,000	49,550
52 x 8	47,468	47,868	41,30	52,000	51,550
60 x 9	54,935	55,360	48,15	60,000	59,500
70 x 10	64,425	64,850	57,00	70,000	69,470

Los husillos estándar tienen 1 entrada por la derecha.  
Sobre pedido entrada por la izquierda, doble entrada, etc.  
Sobre pedido otros materiales como acero inoxidable AISI 304 y AISI 316.

Standard spindles have 1 right-hand entry.  
Upon request left-hand entry, double entry, etc.  
Upon request other material as stainless steel AISI 304 and AISI 316.

Fuseau standard avec 1 entrée à droite.  
Sur demande entrée à gauche, double entrée, etc.  
Également disponibles en acier INOX AISI 304 et AISI 316.

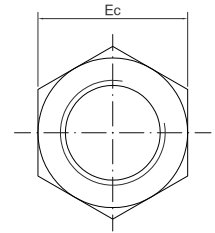
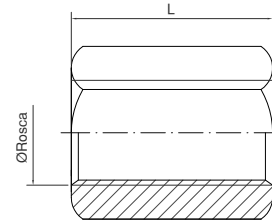


# Vidalı Mil ve Somunları

## Tuerca acero hexagonal

Hexagonal nut  
Écrou hexagonal

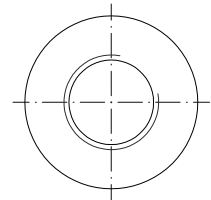
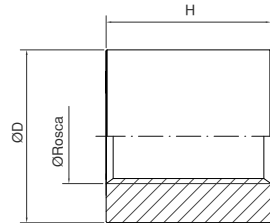
Rosca Thread Filetage	ALTO (L)	ANCHO (Ec)
12X3	21	22
15X3	22	24
16X4	24	27
18X4	25	27
20X4	30	30
22X5	32	30
24X5	36	36
28X5	42	46
30X6	45	46
32X6	45	46
36X6	54	55
40X7	60	65
50X8	75	75
60X9	90	90



## Tuerca acero lisa

Smooth steel nut  
Écrou acier lisse

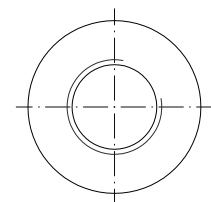
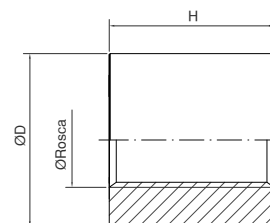
Rosca Thread Filetage	ALTO (L)	ANCHO (Ec)
16X4	36	24
18X4	40	27
20X4	45	30
24X5	50	36
30X6	60	45
40X7	80	60
50X8	90	75
60X9	90	90



## Tuerca bronce lisa

Smooth bronze nut  
Écrou bronze lisse

Rosca Thread Filetage	ALTO (L)	ANCHO (Ec)
12X3	20	20
15X3	40	24
16X4	40	24
18X4	40	24
20X4	40	30
22X5	40	30
24X5	40	30
25X5	40	30
28X5	50	40
30X6	60	45
32X6	60	45
36X6	70	54
40X7	80	60
50X8	80	70
60X9	90	90

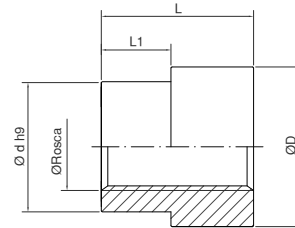


## Tuerca bronce brida

Bronze flange nut

Écrou avec bride bronze

Rosca Thread Filetage	ØD	ALTO (L)	Ød	ANCHO (Ec)
15X3	49	32	40	22
16X4	49	32	40	22
18X4	49	32	40	22
20X4	49	32	40	22
24X5	49	32	40	22
28X5	64	40	50	20
30X6	64	40	50	20
32X6	64	40	50	20
36X6	84	60	70	40
40X7	84	60	70	40
50X8	109	75	90	50
60X9	109	75	90	50



## Tuerca brida de acero y casquillo de bronce

Steel flange nut with bronze bush

Écrou avec bride acier et douille bronze

Rosca Thread Filetage	ØD1	ØD2	ØD3	ØD4	ANCHO (L)	ANCHO (B)	TALADROS
15X3	60	50	38	25	25	10	3 x M6
16X4	70	55	42	30	30	12	4 x M6
18X4	80	65	52	35	37	12	4 x M6
20X4	100	82	65	45	45	16	4 x M6
24X5	110	93	75	55	60	16	6 x M8
28X5	110	93	75	55	60	16	6 x M8
30X6	135	113	90	65	75	18	6 x M10
32X6	155	129	105	75	90	22	6 x M12
36X6	175	145	120	90	105	27	6 x M12

