

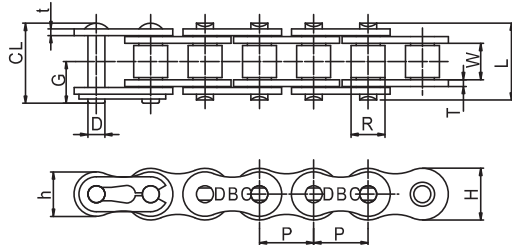
Motosiklet Zincirler Motorcycle chains



GURUR ZİNCİR

www.gururmakina.com.tr

Non O-ring type



This chain is generally selected and applied proportional to the motorcycle displacement, and the chain number is internationally compatible. Required enormous force for high-speed rotations, the chain is forced to withstand from impact, abrasion, and fatigue. Therefore the chain is also widely used in various power transmission equipment of farm machine, general machinery for dyeing, weaving, etc.

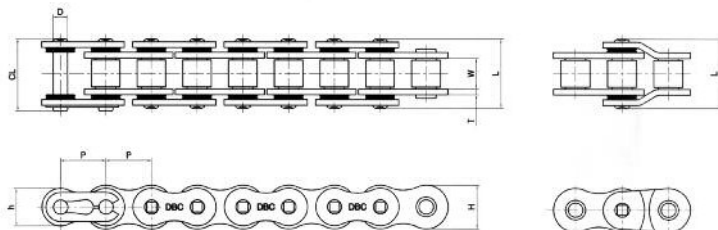
unit : mm

DONG BO Chain No.	Pitch		Inner Width W	Roller Dia R	Plate				Pin				Breaking Load kgf
	mm	inch			T	t	H	h	D	L	CL	G	
DBC 420	12.70	0.500	6.35	7.77	1.5	1.5	12.0	10.4	3.97	14.85	16.30	8.87	1,600
DBC 420H	12.70	0.500	6.35	7.77	2.0	2.0	12.0	10.4	3.97	17.00	19.20	10.70	1,900
DBC 428	12.70	0.500	7.95	8.50	1.5	1.5	12.0	10.4	4.51	16.65	18.20	9.85	1,750
DBC 428H	12.70	0.500	7.95	8.50	2.0	2.0	12.0	10.4	4.51	18.50	20.40	10.85	2,300
DBC 520	15.875	0.625	6.35	10.16	2.0	2.0	15.0	13.0	5.09	17.10	18.70	10.15	2,800
DBC 520H	15.875	0.625	6.35	10.16	2.4	2.4	15.0	13.0	5.09	18.70	20.30	14.00	3,200
DBC 525	15.875	0.625	7.95	10.16	2.0	2.0	15.0	13.0	5.09	18.70	20.30	11.00	2,800
DBC 530	15.875	0.625	9.53	10.16	2.0	2.0	15.0	13.0	5.09	20.60	22.50	12.00	2,800
DBC 530H	15.875	0.625	9.53	10.16	2.4	2.4	15.0	13.0	5.09	21.80	24.00	13.10	3,200

※ To change chain dimensions for development of new model, please consult Dong Bo Chain.

O-ring type

The O-ring Chain is designed by inserting o-rings between the roller link plate and the pin link plate of motorcycle drive chains to prevent protect the components from friction, heat generation and foreign substance penetration between the roller link plate and the pin link plate which are rotate at high-speeds. This chain is adequate for motorcycles with large displacements.



unit : mm

DONG BO Chain No.	Pitch		Inner Width W	Roller Dia R	Plate				Pin				Breaking Load kgf
	mm	inch			T	t	H	h	D	L	CL	G	
DBC 420 OL	12.70	0.500	6.35	7.77	1.5	1.5	12.0	10.4	3.97	17.70	19.60	10.80	1,600
DBC 428HOL	12.70	0.500	7.95	8.5	2.0	2.0	12.0	10.4	4.51	21.40	23.00	12.30	2,300
DBC 520 OL	15.875	0.625	6.35	10.16	2.0	2.0	15.0	13.0	5.09	20.30	21.80	11.60	2,800
DBC 530 OL	15.875	0.625	9.53	10.16	2.0	2.0	15.0	13.0	5.09	23.00	25.10	13.60	2,800
DBC 530HOL	15.875	0.625	9.53	10.16	2.4	2.4	15.0	13.0	5.09	25.50	26.50	13.80	3,200